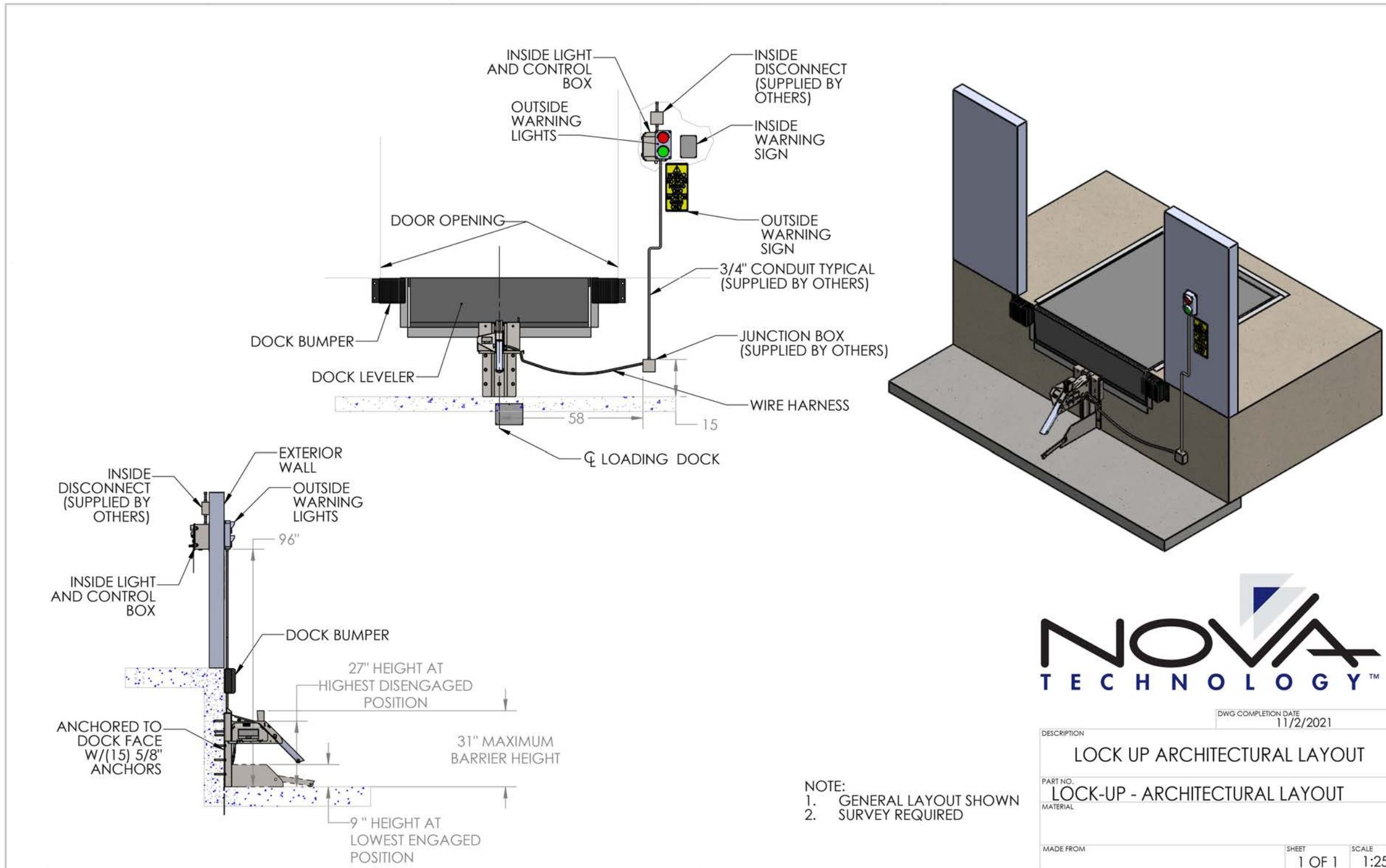


# LOCK-UP™

## ARCHITECTURAL DRAWING



# NOVA LOCK-UP™



1 — VERTICAL BARRIER  
2 — ROLLER TRACK ASSEMBLY  
3 — CARRIAGE ASSEMBLY

4 — SLOPE EXTENSION  
5 — SPRING MOUNTING PLATE  
6 — ROLLER ASSEMBLY




W141N9240 Fountain Blvd, Menomonee Falls, WI 53051  
phone 262-502-1591 | 800-236-7325 | fax 262-502-1511  
www.novalocks.com

## STANDARD FEATURES

- Vertical barrier secures intermodal containers, standard trailers and RIG configurations with cover plates and obstructions
- Exclusive designed gear motor operates on electrical current only when engaging or disengaging the vertical barrier with the RIG, resulting in more reliable operation
- Roller Slope Extension effortlessly rolls on pavement
- Non-contact magnetic proximity sensors provide robust, high-durability, and long-lasting performance
- Over 32,000-pounds of restraining force
- LED inside and outside light communication package
- Interior and exterior signage
- Low-profile carriage with an engagement range of 9 to 31-inches
- Zinc-plated track and housing provides high corrosion resistance
- Standard bypass/override is password-protected for use by authorized personnel only
- Patented activation system ensures RIG/barrier engagement, even when electrical power is lost
- Included RIG sensor notifies the dock attendant when a trailer is present and alerts if the trailer has not been properly secured
- PLC-based control box with integrated maintenance diagnostics; optional with CB-40/41
- CB-00 control box enables interlocking of the dock leveler, door, and gate

## OPTIONAL FEATURES

- IntelliDock Combination control box
- CB-40/41
- Open dock stanchion for control box
- Articulated slope extension
- Projection brackets and reinforcing plates

 **WARNING:** Cancer and Reproductive Harm-[www.P65Warnings.ca.gov](http://www.P65Warnings.ca.gov)