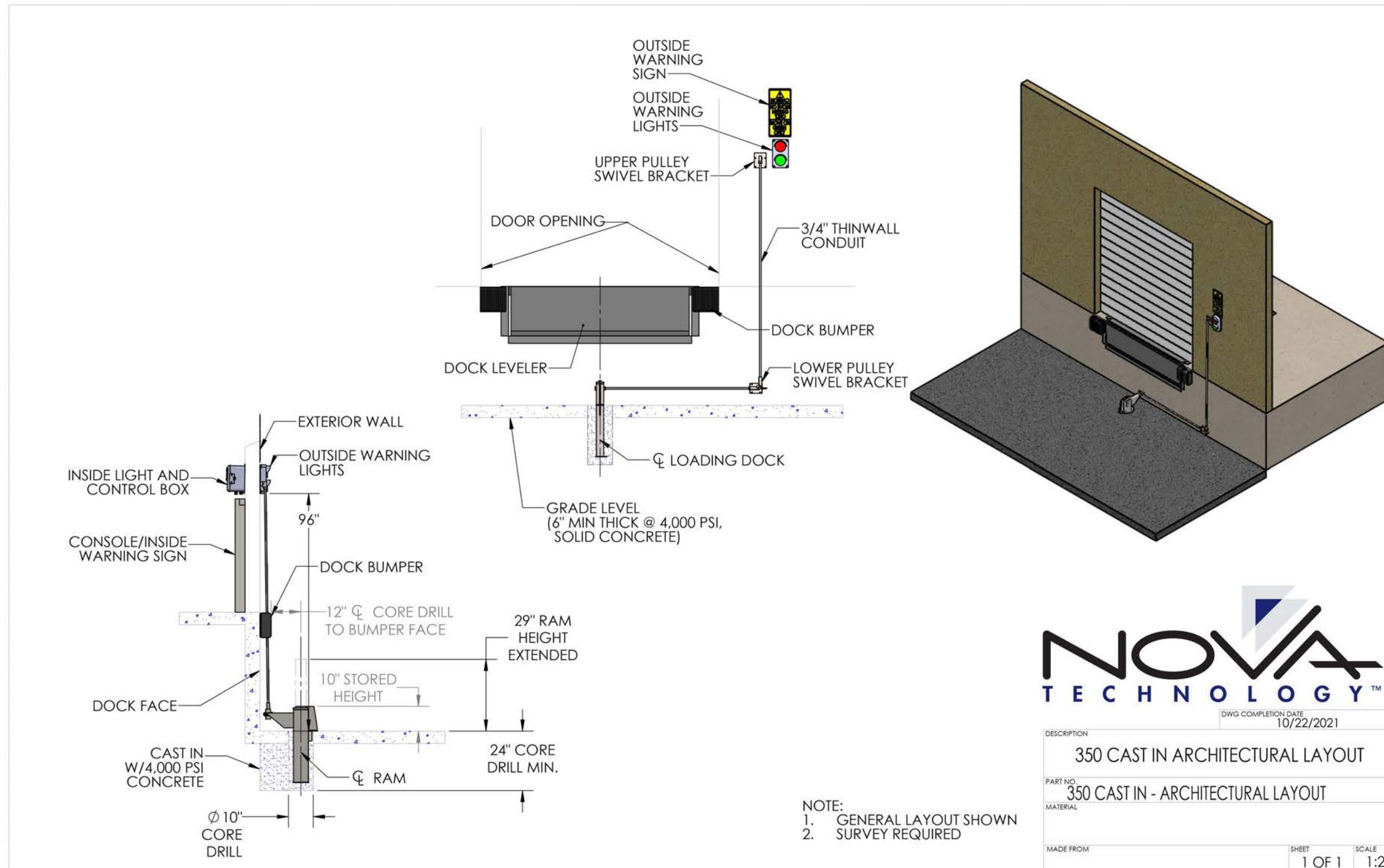


TRUCK LOCK™ 350 SERIES – CAST-IN STYLE

ARCHITECTURAL DRAWING



NOVA
TECHNOLOGY™

DWG COMPLETION DATE
10/22/2021

DESCRIPTION
350 CAST IN ARCHITECTURAL LAYOUT

PART NO.
350 CAST IN - ARCHITECTURAL LAYOUT

MATERIAL

MADE FROM

SHEET

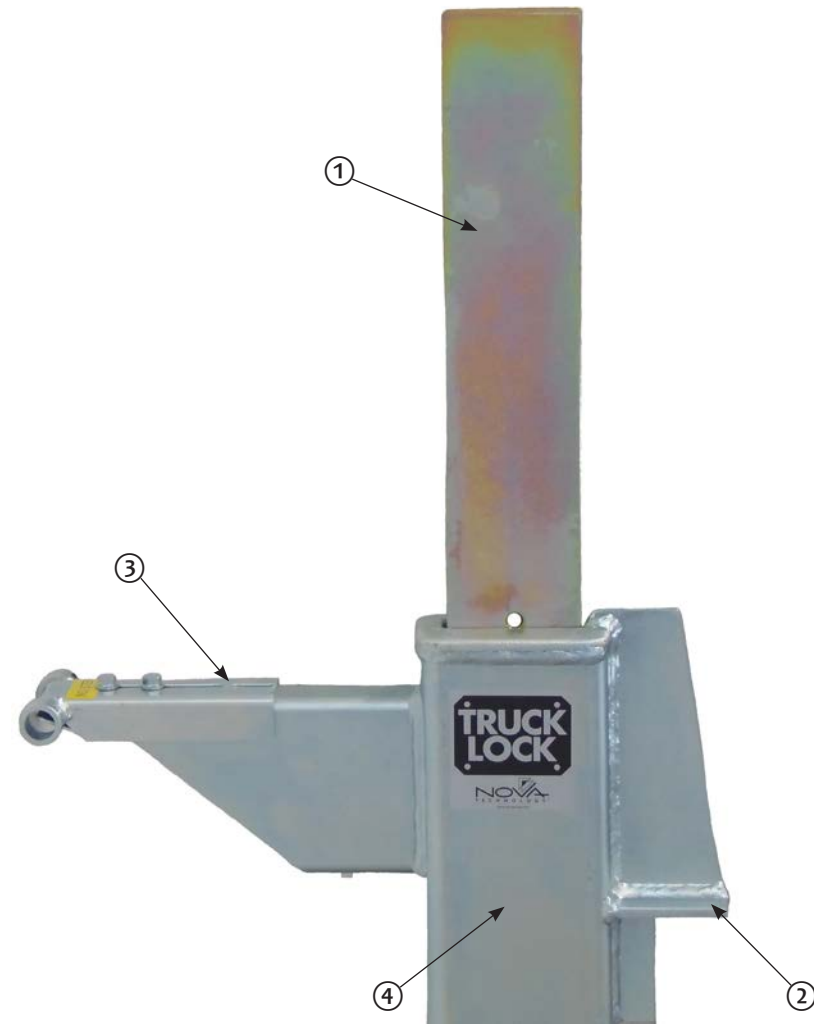
1 OF 1

SCALE

1:25

NOVA TRUCK LOCK™

350 SERIES — CAST-IN STYLE



1 — RAM BAR
2 — SMALL FOOTPRINT

3 — EXTENSION BRACKET
4 — ZINC PLATING


STANDARD FEATURES

- Lifetime warranty
- 10-inch retracted height
- Non-impact design
- Versatility in handling a larger variety of trucks
- Manual or powered versions
- LED inside and outside light communication package
- Withstands over 30,000-pounds of pull-away force
- Ram bar yield strength of 100,000 PSI
- Corrosion-resistant zinc plating
- All activation components mounted inside the building
- Low-maintenance design with very few moving parts
- Installs at nontraditional dock types
- Small footprint

OPTIONAL FEATURES

- Compressor/wall bracket
- Truck sensor
- Interlock with leveler or door
- Open dock stanchion
- Metal building mount kit
- Swivel brackets for unique applications
- Rebar Installation Kit for asphalt or non-concrete approach applications (cast-in style housing only)
- IntelliDock Combination control box (powered versions only)



 **WARNING:** Cancer and Reproductive Harm-www.P65Warnings.ca.gov