



Dedicated to Design.  
Committed to Quality.

# Seating Upholstery

& Finish Color Selection Guide



Grade 4



**Helix**  
63355 Vanilla Bean



63363 Spice



63356 Haze



63361 Stream



63359 Twig



63358 Fog



63357 Noir

Grade 2



**Bryant Park**  
6555 Pumice



6556  
Curry



6551  
Marigold



6554  
Dusk



6559  
Hemlock



6558  
Saxon Blue



6563  
Night Shade



6552  
Medoc



6550  
Burgundy



6564  
Chocolate



6553  
Nile



6562  
Violet



6560  
Gunmetal

Grade 3\*



**Sideline**  
63347 Moon Rock



63346 Heat Wave



63352 Malibu



63350 Shady Lane



63345 Coconut Grove

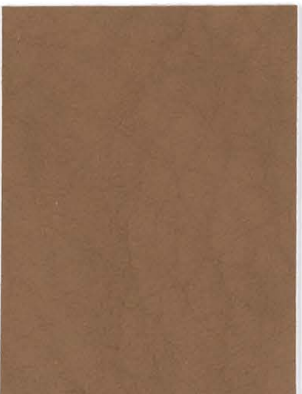


63351 Safari



63349 Crown Jewel

Grade 2



**Moccasin**  
MOC26 Bramble



MOC24 Buck



MOC10 Milieu



MOC22 Classic



MOC30 Rustic Red



MOC32 Shale



MOC28 Onyx

\*Not available on MVMT seating models.



Dedicated to Design.  
Committed to Quality.

800.597.0246 • www.biofit.com

Grade 5



Lava  
LAV12 Stratum



LAV07 Terra



LAV13 Stream



LAV06 Bedrock



LAV05 Sunfire



LAV04 Obsidian



LAV01 Geode

Grade 2



New Hempstead  
NH509 Galaxy



NH420 Jodhpurs



NH359 Azure



NH389 Red Red Wine



NH424 Cocoa



NH366 Steel

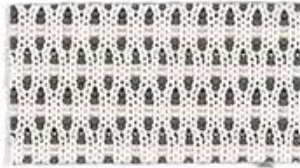


NH395 Grey

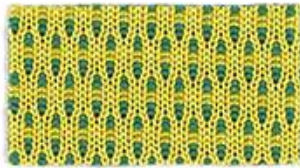
Grade 4



Flex  
63237 Moody



63232 Contrast



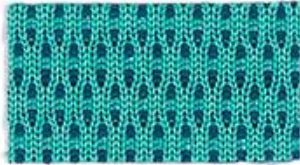
63230 Refresh



63238 Passion



63236 Storm



63233 Escape



63240 Thunder

Grade 3



Clean Slate  
CLN39 Indigo



CLN28  
Acorn



CLN32  
Tangerine



CLN34  
Lime



CLN41  
Teal



CLN40  
Chili



CLN46  
Mocha



CLN22  
Stone



CLN27  
Shark



CLN42  
Willow



CLN20  
Cobalt

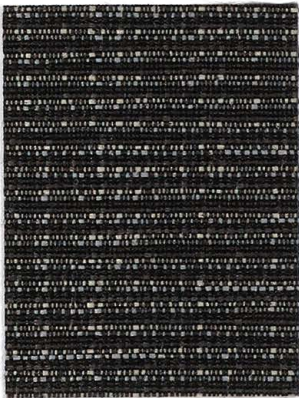

















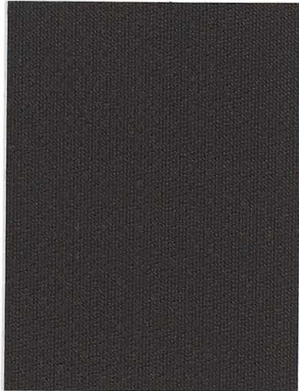







CLN44  
Maroon



CLN48  
Onyx

See more designs available from CF Stinson, along with the respective BioFit grade, at [biofit.com](http://biofit.com) / Tools-Resources.

Grade 2*							
	<b>Dart</b> 63652 Abyss						
							
		<b>Tribeca</b> 63753 Teal					
Grade 2		<b>U R Grounded Gr. C</b> Ebony	<b>Microcon Gr. B</b> Blue	<b>Vacuum Formed Formfit II Vinyl</b> Slate Blue			
		<b>U R Grounded Gr. C</b> Navy	<b>Microcon Gr. B</b> Black	<b>Vacuum Formed Formfit II Vinyl</b> Black			
High-Tech	<b>Conductive Vinyl Gr. A</b> Black	<b>U R Grounded Gr. C</b> Navy	<b>Microcon Gr. B</b> Black	<b>Vacuum Formed Formfit II Vinyl</b> Black			
	<b>SHIP NOW!</b>	<b>New Hempstead Gr. 2</b> NH369 Navy	<b>New Hempstead Gr. 2</b> NH333 Black	<b>Avant Gr. 2</b> AV106 Royal	<b>Avant Gr. 2</b> AV139 Greystone		
							
	<b>U R Grounded Gr. C</b> Navy	<b>U R Grounded Gr. C</b> Ebony	<b>Microcon Gr. B</b> Blue	<b>Microcon Gr. B</b> Black	<b>Avant Gr. 2</b> AV126 Black		

\*Not available on MVMT seating models.

## Grade 4 - Nytek® Breathable Nylon Upholsteries



**Black Finesse**

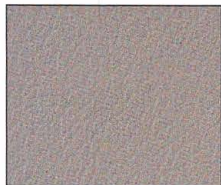


**Grey Finesse**

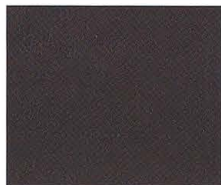


**Indigo Finesse**

## Grade 3 - Phoenix\* Vinyl Upholsteries



**PH65 Pearl**



**PH64 Nearly Black**



**PH62 Claret**



**PH63 Navy**

\* Can meet CA 133 with suitable components

## Colors for GG Series Chairs



**Burgundy**



**Navy Blue**



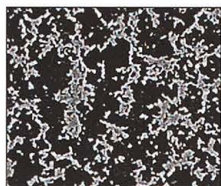
**Black**

Please note: Actual colors may differ from those shown.

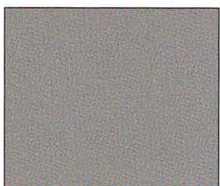
## Standard Metal Part Powder Coat Finishes\*



**06 Black**



**05 Silvervein**



**04 Gray**



**02 Almond**

Please note: Actual colors of metal part finishes may differ from those shown.

\*Chrome available for additional cost.

## Shell Colors for KX Series Chairs



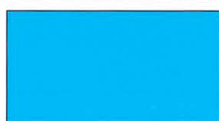
**Newport Burgundy**



**Highland Green**



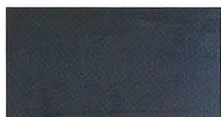
**Nordic Black**



**Mediterranean Blue**



**Caribbean Orange**



**Pacific Blue**

Please note: Actual colors of upholstery may differ from those shown here. Swatches are available upon request.

## Performance Attributes of Patterns

Pattern	Enhanced Soil/Stain Resistance	Fluid-Barrier Protection	Extreme Durability ≥100,000 dr	Antimicrobial Protection	Bleach-Solution Cleanable	Reduced Environmental Impact
<b>Avant</b>	•	•	•	•	•	GREENGUARD
<b>Bryant Park</b>	•		•			GREENGUARD Gold
<b>Clean Slate</b>	•	•	•	•	•	GREENGUARD
<b>Dart</b>	•					GREENGUARD Gold Facts™ Gold Recycled Content
<b>Flex</b>	•		•	•	•	GREENGUARD Gold bluesign®
<b>Helix</b>	•		•	•	•	GREENGUARD Gold / Recycled Content
<b>Lava</b>	•	•	•	•	•	GREENGUARD
<b>Moccasin</b>	•	•	•	•	•	GREENGUARD
<b>New Hempstead</b>	•		•			GREENGUARD Gold
<b>Sideline</b>	•		•			GREENGUARD Gold / Recycled Content
<b>Tribeca</b>	•		•			GREENGUARD Gold

# Specifications

Pattern	Content	Abrasion (Wyzenbeek)	Protective Finish	Cleaning Code
<b>Avant</b>	Contract Vinyl	1,500,000 double rubs	Advanced Soil/Stain Resistant Top Coat	<b>W-S</b>
<b>Bryant Park</b>	100% Polyester	100,000 double rubs	Enhanced Soil/Stain Protection	<b>W</b>
<b>Clean Slate</b>	Contract Vinyl	100,000 double rubs	Advanced Soil/Stain Resistant Top Coat + Ink Resistance	<b>W-S</b>
<b>Conductive Black Vinyl</b>	Vinyl Coated Fabric		Dirt/Stain Resistant	
<b>Dart</b>	58% Polyester, 27% Post Industrial Recycled Polyester, 15% Post Consumer Recycled Polyester	70,000 double rubs	Non-PFOA Stain Resistant	<b>W-S</b>
<b>Flex</b>	100% Polyester	100,000 double rubs	Non-PFOA Stain Resistant	<b>W-S</b>
<b>Formfit II Vinyl</b>	PVC Over Stretch Nylon Substrate	200,000 double rubs	Advanced BeautyGard®	<b>W-S</b>
<b>Helix</b>	50% Post Industrial Recycled Solution Dyed Nylon, 50% Solution Dyed Nylon	100,000 double rubs	Blockaide™ Soil/Stain Protection	<b>W-S</b>
<b>Lava</b>	Contract Vinyl	100,000 double rubs	Zeron® Protective Finish	<b>W-S</b>
<b>Microcon Vinyl</b>	Static-dissipative Vinyl	100,000 double rubs		<b>W**</b>
<b>Moccasin</b>	Contract Vinyl	100,000 double rubs	Soil/Stain Resistant Top Coat	<b>W-S</b>
<b>New Hempstead</b>	100% Polyester	750,000 double rubs	Non-PFOA Stain Resistant	<b>W-S</b>
<b>Nytek®</b>	Nytek® Specially Engineered Nylon Fiber Matrix	250,000 double rubs	Built-in Stain Resistant Finish	<b>W</b>
<b>Phoenix</b>	Contract Vinyl	250,000 double rubs	Enhanced Soil/Stain Protection	<b>W-S</b>
<b>Sideline</b>	100% Post Industrial Recycled Polyester	100,000 double rubs	Non-PFOA Stain Resistant	<b>W-S</b>
<b>Tribeca</b>	100% Polyester	100,000 double rubs	Enhanced Soil/Stain Protection	<b>W-S</b>
<b>U R Grounded</b>	97.5% Nylon, 2.5% Conductrol™	100,000 double rubs		

Conductrol™ is a trademark of Sterling Fibers, Inc.  
Nytek® is a registered trademark of Majilite Corporation, Dracut, MA 01826.  
Beautygard® is a registered trademark of Uniroyal Engineered Products.

#### \*\* Cleaning:

Clean with a solution of mild liquid soap and water, then wipe with a lint-free cloth. The use of any product containing silicone, alcohol, or solvents is not recommended, as it will adversely affect the ESD properties of the materials.

#### Flammability:

All patterns meet or exceed the flammability requirements of California Technical Bulletin 117-2013, Sec.1. Some patterns have been tested for other flammability specifications. These patterns may contribute to compliance with California Technical Bulletin 133 when used in conjunction with other suitable components.

#### Cleaning Codes:

**W:** Water-based cleaning agents and foam may be used for cleaning. Cleaning by a professional furniture cleaning service is recommended.

**W-S:** Water-based cleaning agents and foam may be used for cleaning. This material may also be cleaned with mild, water-free solvents. Cleaning by a professional furniture cleaning service is recommended.

**Memo Samples:** Please contact BioFit at 800-597-0246 or biofit@biofit.com

## Stinson®

C.F. Stinson, LLC  
2849 Product Drive  
Rochester Hills, MI 48309

w cfstinson.com  
p 800 841 6279  
f 248 299 3884



**Dedicated to Design.  
Committed to Quality.**

BioFit Engineered Products  
P.O. Box 109  
Waterville, OH 43566-0109  
USA  
©2016 BioFit Engineered Products #001760

www.biofit.com

800.597.0246