



# Loading Dock Lifts





# Transfer Loads from Any Truck Bed Height to Any Loading Dock Height... Including Ground Level

## The Advantages of a Dock Lift

Dock lifts are more versatile than dock levelers, faster than manual loading and unloading, safer than ramps and inclines and less expensive than recessed truck wells.

## Models and Applications

Southworth offers seven standard dock lift models with capacities from 5,000 to 20,000 lbs., platform sizes up to 8' x 12', and a variety of installation configurations to accommodate most any loading dock requirements. Models featuring an "M" designation are built for use with two wheel dollies, hand carts, and hand pallet trucks. "H" model designations can be used with powered devices like powered pallet trucks, counterbalanced stackers and forklift trucks.

## Adaptable Travel Range

With nearly 5' of travel range, dock lifts can accommodate many types of trucks—from vans and pickups to tractor trailers and container trucks. Loads on dock lifts are always kept level, making transport safer and easier than traveling up or down the inclines created by dock levelers or ramps.



# Weatherproof Construction

All Southworth Dock Lifts are manufactured with structurally reinforced heavy steel plate platforms to minimize deflection. Wide-base design provides increased rigidity and stability. **Models DL5-59 and DL6-59 Dura-Dock dock lifts feature corrosion-resistant galvanized base and legs as standard.**

## Vertical Lifting



Galvanized base and legs are standard on DL5-59 and DL6-59 Dura-Dock models

# Pit or Surface-Level Mounting

Southworth Dock Lifts can be recessed in a pit for ground-level lowering or surface-mounted on a concrete pad (requires optional ramp for grade-level access).



## Mechanical Features

- ✓ Bevel toe guard platform
- ✓ Diamond tread deck for improved traction
- ✓ Diamond tread hinged throw-over plate with lifting chain
- ✓ Removable steel handrails with mid-rail, 4" side-kick plate and safety chain
- ✓ Maintenance strut supports lift for servicing
- ✓ Removable lifting eyes for ease of installation
- ✓ Conforms to ANSI MH29.1 Standards

## Electrical/Hydraulic Features

- ✓ Pre-wired power unit and control panel
- ✓ Weatherproof NEMA 4 push-button control pendant with 20' coil cord
- ✓ Oversized, low pressure hydraulic cylinders
- ✓ Heavy-duty hoses with burst strength 4x greater than operating pressure
- ✓ Flow control valve with adjustable lowering time
- ✓ Excess flow protection for controlled descent of lift
- ✓ Standard Voltages: 208/230/460V - 3 Phase

## Options & Accessories

- ✓ Grade-level access ramp (for above ground lifts)
- ✓ Upper travel limit switch—mounted and wired
- ✓ Accordion skirting or roller shade
- ✓ Warning bell with flashing light
- ✓ NEMA 4 enclosures
- ✓ Corrosion-resistant coatings (standard on Dura-Dock models)
- ✓ Environmentally-friendly biodegradable hydraulic fluid
- ✓ Other bridge plate sizes available
- ✓ Mechanical wheel chock to prevent fork truck from rolling off lift while elevated

# Specifications



M-Series: Medium-Duty



H-Series: Heavy-Duty

## M-Series: Medium-Duty Dock Lifts

Model Number	Lift Capacity (pounds)	Roll-Over Capacity (pounds)	Standard Platform (feet)	Maximum Platform (feet)	Vertical Travel (inches)	Lowered Height (inches)	Throw-Over Plate (inches)	Rise Time (seconds)	Motor	Approx. Shipping Weight (pounds)
DL 5-59M *	5,000	10,000	6 x 8	8 x 10	59	8	18 x 60	27	3.2 HP	2,800
DL 6-59M *	6,000	10,000	6 x 8	8 x 10	59	8	18 x 60	27	3.2 HP	2,900
DL 8-59M	8,000	10,000	6 x 8	8 x 10	59	10	18 x 60	42	3.2 HP	3,200

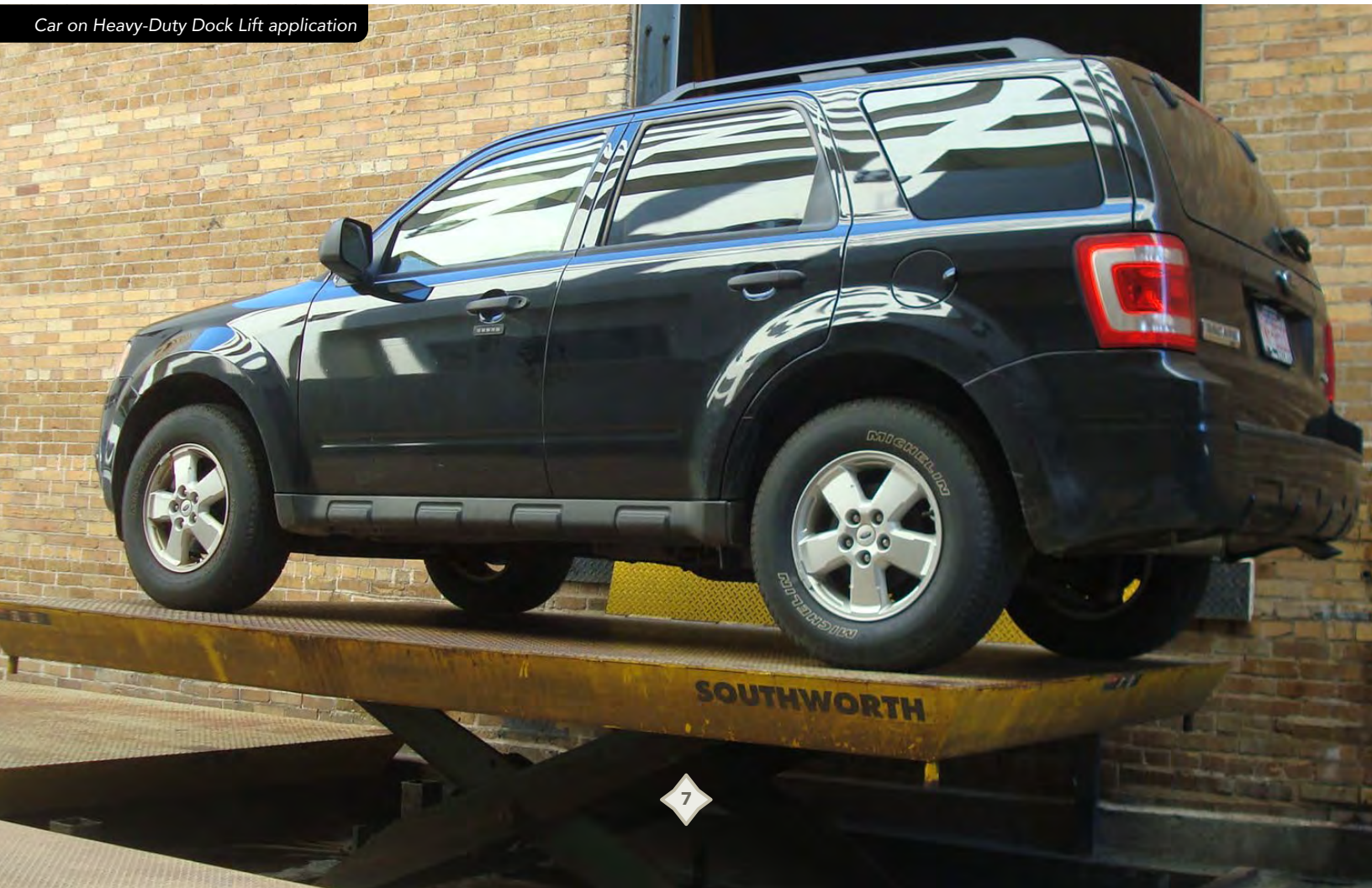
Model DL5-59M and DL6-59M Dock Lifts feature Southworth's exclusive Dura-Dock galvanized base and legs construction

## H-Series: Heavy-Duty Dock Lifts

Model Number	Lift Capacity (pounds)	Roll-Over Capacity (pounds)	Standard Platform (feet)	Maximum Platform (feet)	Vertical Travel (inches)	Lowered Height (inches)	Throw-Over Plate (inches)	Rise Time (seconds)	Motor	Approx. Shipping Weight (pounds)
DL 10-59H	10,000	10,000	6 x 10	8 x 12	59	16	18 x 60	34	5	5,000
DL 12-59H	12,000	12,000	6 x 10	8 x 12	59	16	18 x 60	36	5	5,200
DL 16-59H	16,000	16,000	6 x 10	8 x 12	59	16	18 x 60	50	5	5,500
DL 20-59H	20,000	20,000	6 x 11	8 x 12	59	22	18 x 60	60	5	7,900

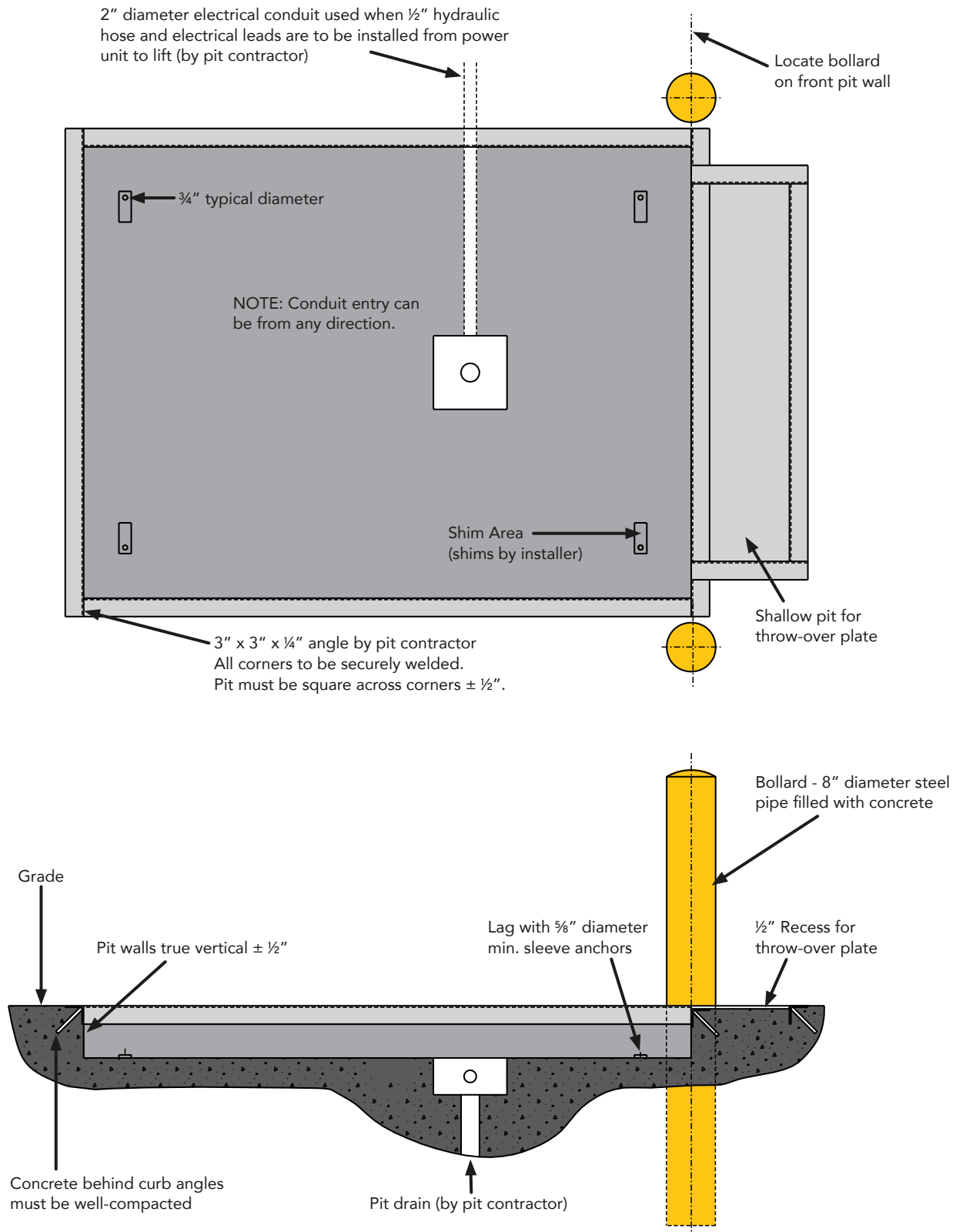


Pit-mounted Dock Lift application



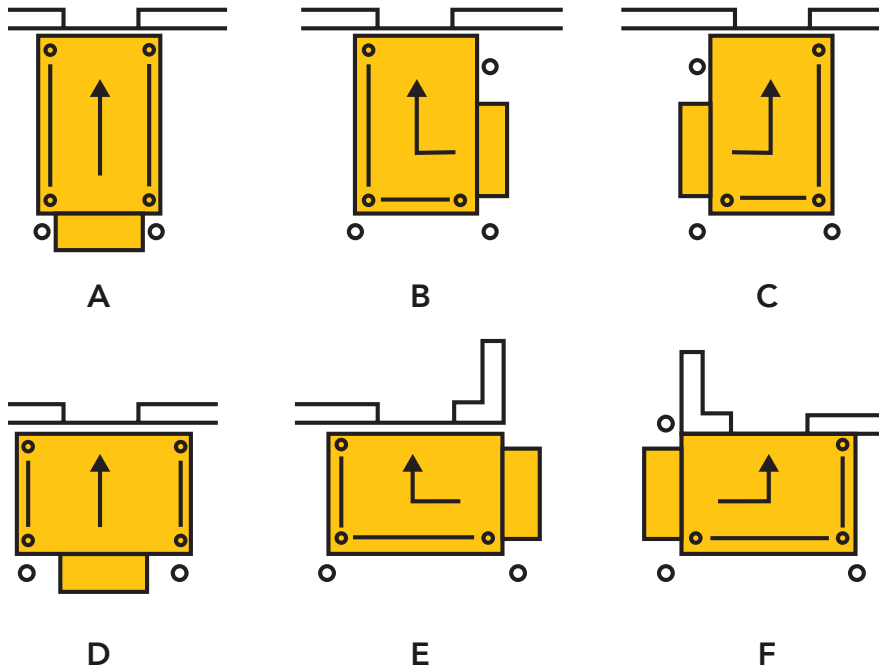
Car on Heavy-Duty Dock Lift application

# Typical Pit Plan



# Transfer Arrangements

Handrail and hinged throw-over plate locations should be specified if other than style "A".



## Manufacturer's Warranty

All Southworth Dock Lifts carry a full two-year warranty on parts and labor as well as a 10-year structural warranty.

## Furnished by Southworth

- ✓ Pit plans are shared upon receipt of order.
- ✓ Installation and service manuals are provided with dock lift shipment.

## Work to Be Done by Owner's Contractor

- ✓ Unloading equipment at time of delivery
- ✓ All electrical work including wall disconnect switch
- ✓ Concrete work, building modifications and excavation
- ✓ Underground piping, conduit, angle framing to pit, embedded items, shims, lag bolts, and sump drain
- ✓ Supply hydraulic connecting hose or pipe from power unit to pit sump (see Southworth Pit Plan for details)



Barron Equipment  
4710 N Brady St,  
Davenport, IA 52806

 Tel: 563-391-1052

 Toll-Free: 800-397-6690

 [barroneq.com](http://barroneq.com)

