

## ► BCE | PERFORMANCE

### BCE | Performance Table

MODEL	Nozzle Width (in.)	Max. FPM at Nozzle	Avg. FPM	Max. CFM	CFM at Nozzle	Outlet Velocity Uniformity	Number of Motors	Motor HP	Weight (lbs)
BCE-1-36	36	3516	3146	2418	2170	95%	1	1/2	85
BCE-1-42	42	3516	2697	2820	2163	93%	1	1/2	92
BCE-1-48	48	3516	2359	3223	2155	92%	1	1/2	99
BCE-1-60	60	3516	2125	3552	2167	91%	1	1/2	113
BCE-2-60	60	3516	2822	4250	3245	95%	2	1/2	142
BCE-2-72	72	3516	3147	4838	4326	95%	2	1/2	164
BCE-2-84	84	3516	2697	5640	4314	93%	2	1/2	184
BCE-2-96	96	3516	2360	6445	4334	92%	2	1/2	198
BCE-3-108	108	3516	3139	7254	6489	95%	3	1/2	241
BCE-3-120	118	3516	2684	8059	6472	94%	3	1/2	269
BCE-3-132	133	3516	2343	9088	6475	95%	3	1/2	279
BCE-4-144	145	3516	3147	9676	8652	95%	4	1/2	328

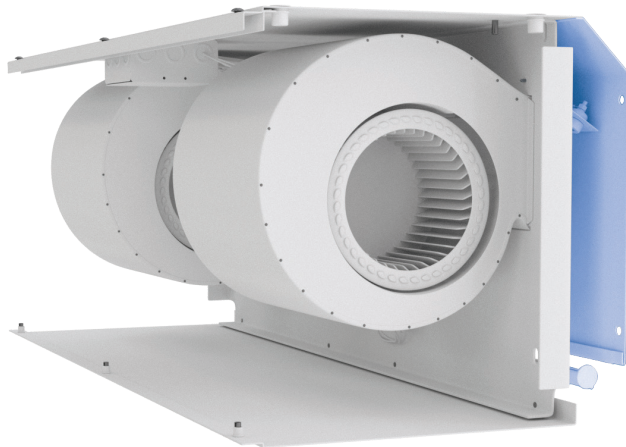
**!** For a unit over 12 feet long, consult factory.

### BCE | Sound Levels

**High Speed**      60 dBA      Measured 10 ft. from unit in a free field based on a 1 motor unit

### BCE | Single Phase Motor Options

<b>Voltages available</b>	120	208/230	480	575
<b>Amp draw per motor</b>	7.3	3.0	1.7	1.3



### Performance Highlight

Both important and perfect for insect control, the blowers are pointed toward the back of the air curtain. Here they fill a specially designed plenum. When the plenum is pressurized, the air is then forced out evenly across the entire length of the plenum discharge leaving no gaps in the curtain of air.