

# VS<sup>®</sup> Series Vertical Storing Dock Leveler



**40K - 50K**  
CIR

**6' - 7'**  
WIDTH

**5' - 8'**  
LENGTH

## FEATURES

- Full-featured push-button control box
- Structural-steel support members
- Power-up and power-down control
- Free-float working range
- Mechanical storage locking mechanism provides redundant safety
- Push-button release of storage prop
- Dual-maintenance prop
- 3" high run-off guards
- 10" above, 8" below-dock service range (6' leveler)
- Overhead door interlocks (dry terminal)
- Rear-embed channel with factory installed hinges
- VB420-11 laminated dock bumpers with raised bumper brackets
- Designed and manufactured in the USA

Connect online  
with

**myQ<sup>®</sup>**  
**Enterprise**

*\*VS Series 7'x6' 40,000 CIR, shown  
with remote motor and solenoids*

# UNMATCHED ENVIRONMENTAL CONTROL

## ENVIRONMENTALLY FRIENDLY

The Poweramp VS Series leveler stores in the vertical position allowing the door to form a perfect seal to the pit floor. Compared to “pit style” levelers, which can radiate expensive conditioned air to the outside of the building in the stored position, vertical storing levelers can produce savings equivalent to one ton of refrigeration in the stored position alone. A variety of deck, pit and face mounted draft seals can produce even greater savings, reducing energy loss while the vertical leveler is in use.

## CLEANLINESS

Highly regulated industries such as the food industry, choose Poweramp VS Series levelers for cleanliness improvements in the dock area. Access for cleaning, overall visibility, and rodent control is a notable improvement over conventional “pit style” levelers.

## IMPROVED PRODUCTIVITY & SECURITY

A continuous pit and vertical application can permit swing trailer doors to open inside the building once the trailer has backed into the dock thus improving productivity and enhancing security. Since it is no longer necessary to stop short of the dock to open, close or secure the trailer’s doors, reduced down-time is certain to produce tangible results.

## MAINTENANCE CONSIDERATIONS

Structural, mechanical, and hydraulic components are visible and easily accessible to maintenance personnel for adjustments, operational checks and daily house keeping. Increase productivity

and efficiency with vertical storing levelers by eliminating time-consuming repositioning of trailers or unnecessary air exchange through an open dock door, a common problem with “pit style” levelers. Since vertical levelers store in front of the overhead door and incorporate side run-off guards, customers virtually eliminate door damage from impact with forklift trucks or staging product in and around dock doors.



*The Poweramp VS Series leveler stores in the vertical position, protecting the overhead door from damage. Overhead rack storage can be added to maximize empty pallet storage.*

## LOWER YOUR INITIAL BUILDING COSTS WITH CENTRAPOWER®



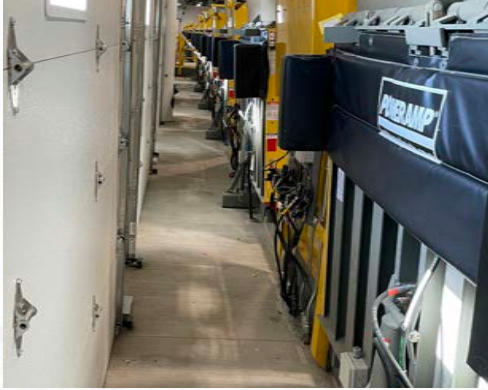
*If your business requires six or more dock levelers, you can reduce the expense of operating and maintaining multiple individual pumping stations by using a single hydraulic source, CentraPower® System by Poweramp.*

CentraPower is an easy to install, cost-effective, multi-leveler remote system. CentraPower consolidates the individual electric motors, pumps and reservoirs of several standard levelers into one convenient hydraulic pump station. The reduction of “home run” electrical runs, disconnects and control wiring can produce significant initial cost savings while simplifying maintenance requirements. Additional system assurances are afforded as CentraPower comes standard with a back-up motor and pump assembly for complete peace of mind.

# VS® Series Vertical Storing Dock Leveler

## CONTINUOUS PIT VS. INDIVIDUAL PIT

A continuous pit is more economical to construct and permits easy access for house keeping. Individual pits can be formed by notching around door jambs to allow the door to close firmly to pit floor, creating room for staging between pits.



## CONTROL STANCHIONS

Proper stanchion and railing design controls access to the pit area. Where power doors are utilized, restricted access to the pit area can be accomplished by widening stanchions and railings.



## ENVIRONMENTALLY & SECURITY CONTROL

The VS leveler is ideal for opening trailer doors into the building, as well as allowing the overhead door to seal along the pit floor when closed, a desirable application consideration for enhanced environmental and security control. This also allows for a secure chain of custody during the loading process.



# VS<sup>®</sup> Series Vertical Storing Dock Leveler

40K - 50K  
CIR

6' - 7'  
WIDTH

5' - 8'  
LENGTH

The Poweramp VS Series vertical storing hydraulic leveler offers unmatched environmental control for temperature controlled applications. Designed with the highest level of strength, security and safety make the VS an excellent choice for any advanced loading dock operation.

## OPERATION

The VS Series leveler is controlled remotely from a multiple push-button control panel that includes raise, lower and lip control buttons. The lip control button allows independent extension and retraction of the leveler lip. Raise and lower controls utilize constant pressure for additional safety. The service range of at least 10" above dock and at least 8" below dock level is standard on all units. The factory finish includes rust inhibitive prime coat finish.



Increased service range with Poweramp's low profile/wide flange structure.

## HYDRAULICS & ELECTRICAL

The platform is raised by a main hydraulic cylinder with all hydraulic hoses routed under the leveler platform, away from debris. The hoist cylinder is a hard chrome-plated design with a 3 1/2" ID bore and anti-corrosive rod coating. Motor and pump is deck mounted standard or can be remote mounted for easier access.

The hydraulic pump motor is a 1.5 HP TENV at 120v or 208v single-phase or at 208v, 230v or 460v three phase. All electrical components, connections and wiring are UL listed or recognized.

## SAFETY FEATURES

- Mechanical storage locking system for redundant safety storage
- Blue, safely-stored indicator light on control panel
- Constant-pressure push-buttons
- Infinite lip control
- 3" high run off guards
- Stored with slight tilt away from dock attendants

4710 N Brady St | Davenport, IA 52806  
barroneq.com | sales@barroneq.com  
800-397-6690



Designed, Engineered, and Manufactured in the U.S.A.  
© 2026 Systems, LLC/Poweramp  
Consistent with our policy of continuing product improvement, we reserve the right to change product specifications without notice or obligation.



Vertical steel-faced bumpers with gusseted bracket and load distribution plate.

## VEHICLE RESTRAINTS & ACCESSORIES

For a safer loading dock, we recommend all Poweramp levelers be equipped with a light communication system, iDock Controls, and vehicle restraints, which help prevent unexpected trailer departure from the loading dock. Safety barriers are also available to prevent forklift trucks from driving over the dock edge.

## CONSTRUCTION

The VS Series combines structural-steel with a proven hydraulic operation to produce a safe and reliable hydraulic dock leveler. It has a maximum Comparative Industry Rating (CIR) of 50,000 lbs. All Poweramp Levelers are built with a durable, four-sided box-construction. The use of structural steel C-channels or I-beams create substantially more deck support than other levelers, as well as enhanced service range below dock.



## CONNECTIVITY

Optional iDock<sup>®</sup> 2.0 Controls with online connection to myQ<sup>®</sup> Enterprise.



## VS<sup>®</sup> SERIES

## COMMON OPTIONS

- CentraPower<sup>®</sup>
- Control panel stanchions
- Custom interlocking
- Dock Alert light communication system
- Dock lights
- Integrated control panel
- Remote mounted motor
- Special capacity and widths available upon request
- Steel-faced bumpers
- Under leveler curtain with wedge pads
- Vehicle restraint
- Vertical dock bumpers



**BARRON**  
EQUIPMENT COMPANY INC.  
OVERHEAD DOORS