

# STEEL PIPE BOLLARD

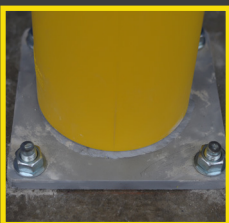
MORE  
SIZES &  
STYLES

MULTIPLE  
APPLICATIONS  
AND INSTALLS

MADE  
IN THE  
U.S.A

- **FINISH OPTIONS:** Galvanized, raw, prime painted, or powder coated
- Made from U.S. Steel
- Custom sizes, custom heights, custom configurations
- Available in any length
- Offered in a collection of finishes and applications
- 3" - 10" Sch 40 & Sch 80 pipe bollards in stock and ready to ship
- **ALL TYPES OF BOLLARDS:** Storefront Bollards, Crash Bollards, Removable, Collapsible, Flexible, and Customized
- **MULTIPLE BASE PLATE OPTIONS:** Super Duty, Square, and Rounded
- Cover with any of our 15 Ideal Shield Bollard Cover options

## INSTALLATION OPTIONS



BOLT DOWN



SUPER DUTY



REMOVABLE



# YOUR ONE STOP SHOP FOR STEEL BOLLARDS & BOLLARD COVERS



## REMOVABLE LOCKING BOLLARDS

- Easy to install and remove
- Self-closing hinged lid ensures pedestrian safety
- Pipe finishes include raw or galvanized; recommended with 1/8" Bollard Cover



## COLLAPSIBLE LOCKING BOLLARDS

- 4" or 6" option
- Includes Bollard Cover
- Schedule 40 Steel Pipe
- Custom colors and logos available for bollard cover



## CRASH RATED BOLLARDS

- C40 Traffic Impact Bollard
- K4 Rated Bollard
- K12 Rated Bollard



## FLEX BOLLARDS

- 360° of flexibility
- Immediate rebound
- Withstands 75 mph winds
- Come with 1/8" bollard cover



## BASE PLATE BOLLARDS

- Pipe and base plate made of U.S. Steel
- Covered with 1/8" or 1/4" Bollard Cover
- Standard heights include 27", 36", 42", 48" or 52"



## BOLLARD COVERS

- 1/4" and 1/8" available
- Logos and graphics available for corporate branding
- Maintenance-free product; never paint again!



## REFLECTIVE BOLLARD COVERS

- 1/8" or 1/4" thickness available
- Fits 4 or 6" pipe
- Tape options : yellow, red, and silver available



## DECORATIVE BOLLARD COVERS

- 9 different decorative style covers
- Fits over 6" and 10" pipe
- Steel inserts available to fit smaller pipe sizes



## AD SHIELD FABRIC COVERS

- Add your own custom design
- Machine washable
- Fits over 6" x 59" bollards