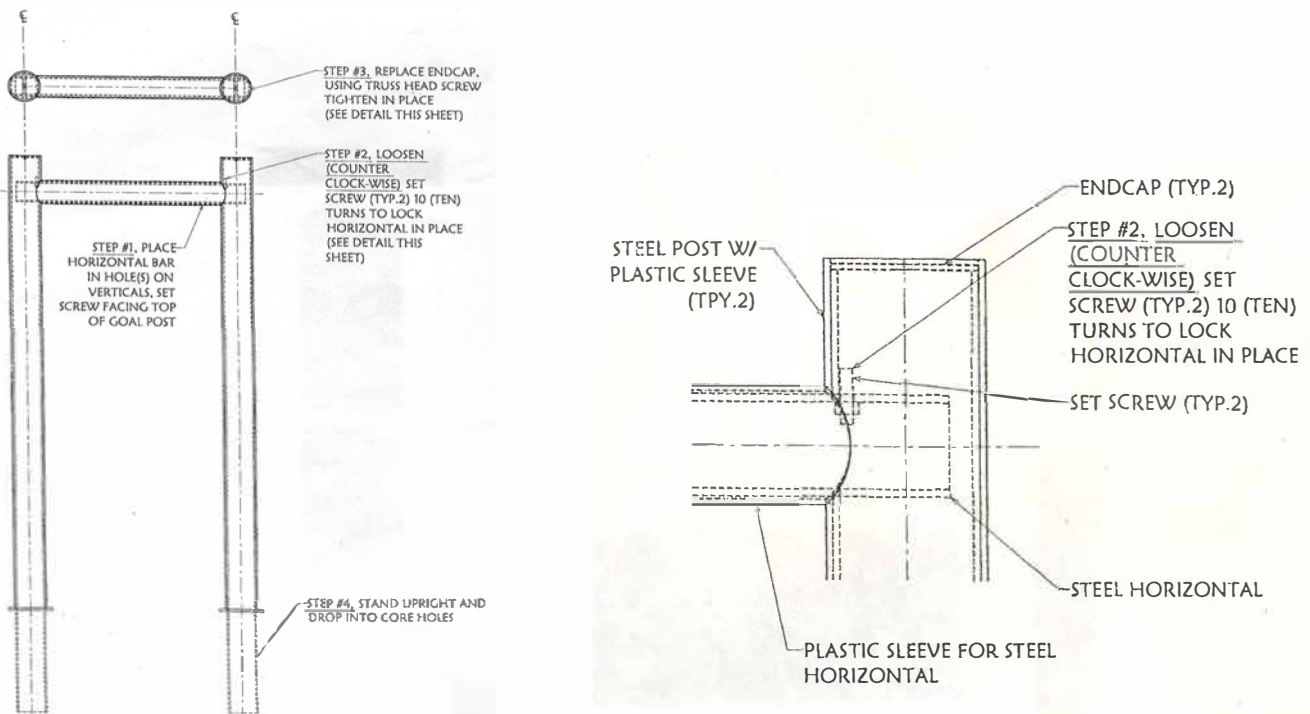


INSTALLATION INSTRUCTIONS GOAL POST SYSTEM

WARNING INSTRUCTION MUST BE READ BEFORE INSTALLATION

1. ALL IDEAL SHIELD GOAL POSTS ARE SHIPPED IN 3 PIECE SECTIONS.
2. ALL MEASUREMENTS ARE INSIDE DIMENSIONS UNLESS OTHERWISE SPECIFIED.
3. LAY VERTICAL PIECES ON THE FLOOR AT SPECIFIED LENGTH.
4. PLACE HORIZONTAL PIECE INTO VERTICAL. BOLTS AT EACH END OF HORIZONTAL RAIL MUST BE BACKED OUT 1 1/2" TO LOCK SYSTEM IN PLACE. AFTER BACKING OUT BOLTS, REPLACE PLASTIC END CAPS AT TOP OF THE VERTICAL PIECES.



5. RECOMMENDED CORE DEPTH IS A MINIMUM DEPTH OF 24". IF USING A STEEL FLOOR SLEEVE (TO MAKE UNIT REMOVABLE) CORE AT 10" HOLE THE DEPTH OF YOUR STEEL CORE SLEEVE ORDERED. SET STEEL FLOOR SLEEVE AND ALLOW CONCRETE TO CURE.

6. AFTER STEEL FLOOR SLEEVES HAVE CURED, LIFT RAILING UP WITH FORKLIFT AND SLOWLY DROP UNIT INTO PLACE. HAVE A PERSON AT EACH END POST TO STEADY GOAL POST INTO PLACE AS YOUR SLOWLY LOWER GOALPOST.

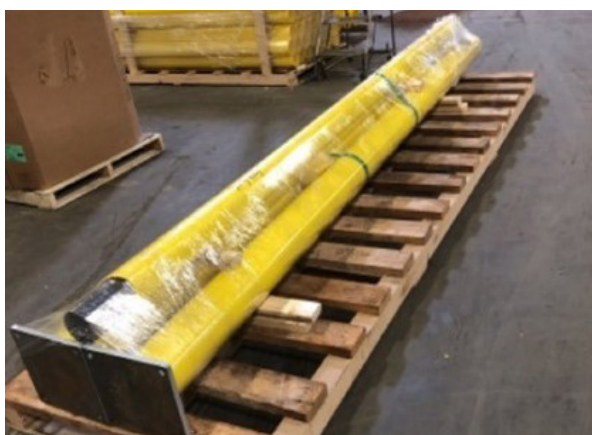
PLATED GOAL POST INSTALLATION INSTRUCTIONS

Required for Install:

- Three workers
- One forklift with ratchet straps or come along cable
- 3/4" concrete drill
- Qty: 8 3/4" wedge anchors (length of bolt varies on application, typically 6") or epoxy anchors [recommended if unit greater than 12 feet tall]

*Consult your local anchor provider for your specific application.

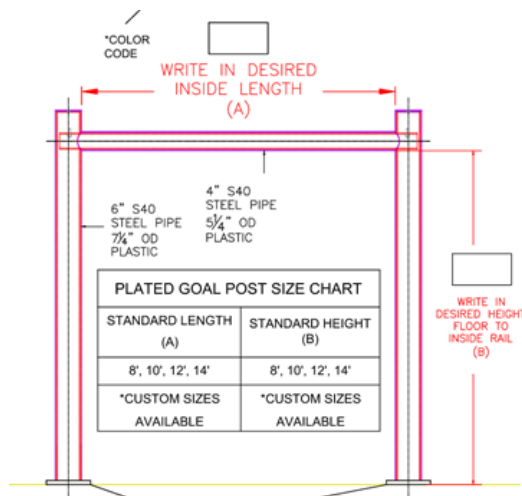
- Wrench that can match the anchor specified torque rating 5/16" Allen wrench for backout bolt



Directions:

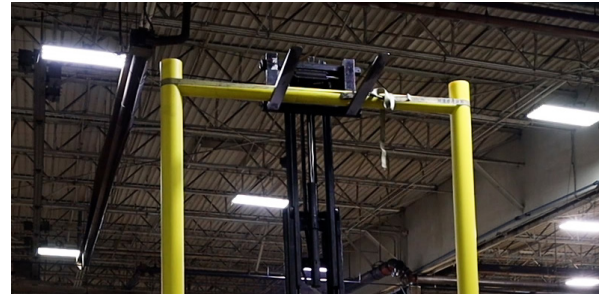
1. All Ideal Shield goal post are shipped in three piece sections. Typically, two 6" post and a single 4" horizontal rail. See picture.

2. Using the provided drawing look for the box at the top marked as inside length.



3. With the unit still on the ground, insert the 4" horizontal rail into the two holes on the 6" post.

4. With the 4" post in the holes secure the two 6" post at the hole location with a ratchet strap or band.



5. Back out the two bolts that are installed on the 4" horizontal rail 1 ½" [11 turns] and replace the two caps on the posts.

6. Install the two supplied yellow end caps.

7. Lift the 4" horizontal rail unit with a forklift using two other workers to stabilize the 6" posts as the unit lifts off the ground. Do not stand in a way that the unit can fall on you.

8. With the unit upright, stabilize the post and verify the inside distance matches the drawing. Adjust if necessary.

9. With the post secure, use the baseplate as a template for your mounting holes.

10. Using the ¾ inch drill, drill out the holes to the required depth for your anchors

11. Install the anchors and tighten to the required torque rating specified by the manufacturer.

12. Remove the band or ratchet strap.

**If unit has sustained an impact, check the nuts, and tighten if loose.*

**Inspect nuts on baseplates monthly*

Disassembly:

1. Before you remove any nuts from the ground unit, make sure the 4" horizontal post is secure. This unit together at the top the unit can fall/rotate in an unexpected way.

2. Press the two 6" post at the 4" horizontal rail hole location with a ratchet strap or band.

3. Secure the to 4" rail with a forklift and straps

4. Lower to the ground with two workers stabilizing the 6" posts

5. When on the floor, screw in the backout bolts after removing the caps to separate the unit.

www.barroneq.com

sales@barroneq.com

4710 N Brady St, Davenport, IA 52806

