

M50 STANDALONE

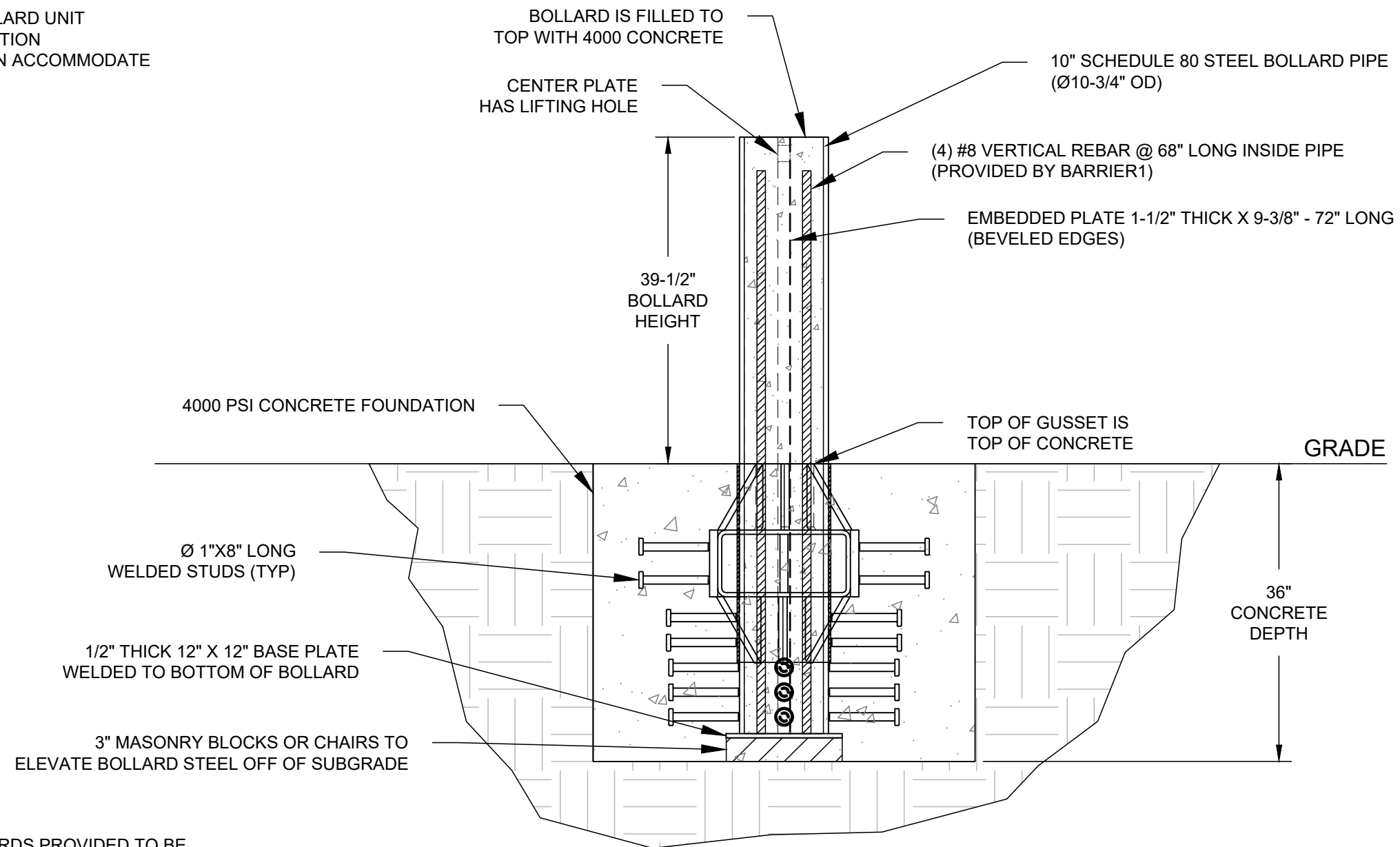
SET & POUR BOLLARD - MODEL SPB-1200

CRASH TESTED TO ASTM F2656-07 - M50/P2 RATED - STOPS 15,000 LB. VEHICLE AT 50 MPH IMPACT

TYPICAL SINGLE BOLLARD INSTALLATION

KEY FEATURES:

1. PREFABRICATED BOLLARD UNIT
2. NO REBAR IN FOUNDATION
3. BOLLARD SYSTEM CAN ACCOMMODATE TURNING RADIUS



NOTE:
TOTAL QUANTITY OF BOLLARDS PROVIDED TO BE
DEFINED ON PURCHASE ORDER.



PATENT PROTECTED

ELEVATION VIEW
(STAND-ALONE)

SPB-1200
WEBSITE DRAWING

SHEET: 1 OF 6

20250625-10-M

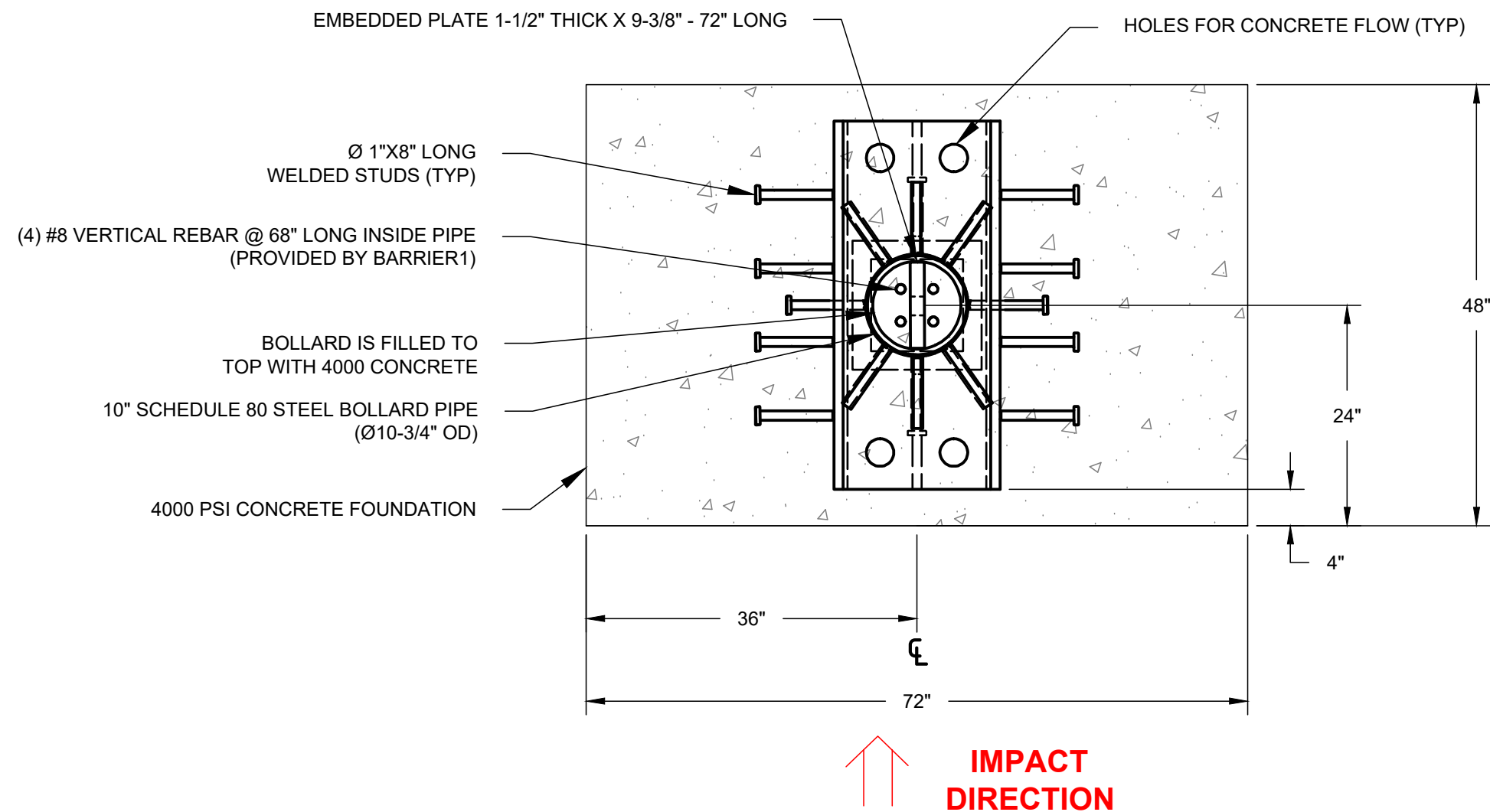
SCALE: N.T.S.

M50 STANDALONE

SET & POUR BOLLARD - MODEL SPB-1200

CRASH TESTED TO ASTM F2656-07 - M50/P2 RATED - STOPS 15,000 LB. VEHICLE AT 50 MPH IMPACT

TYPICAL SINGLE BOLLARD INSTALLATION



PATENT PROTECTED

PLAN VIEW
(STAND-ALONE)

SPB-1200
WEBSITE DRAWING

SHEET: 2 OF 6

20250625-10-M

SCALE: N.T.S.

M50 ARRAY

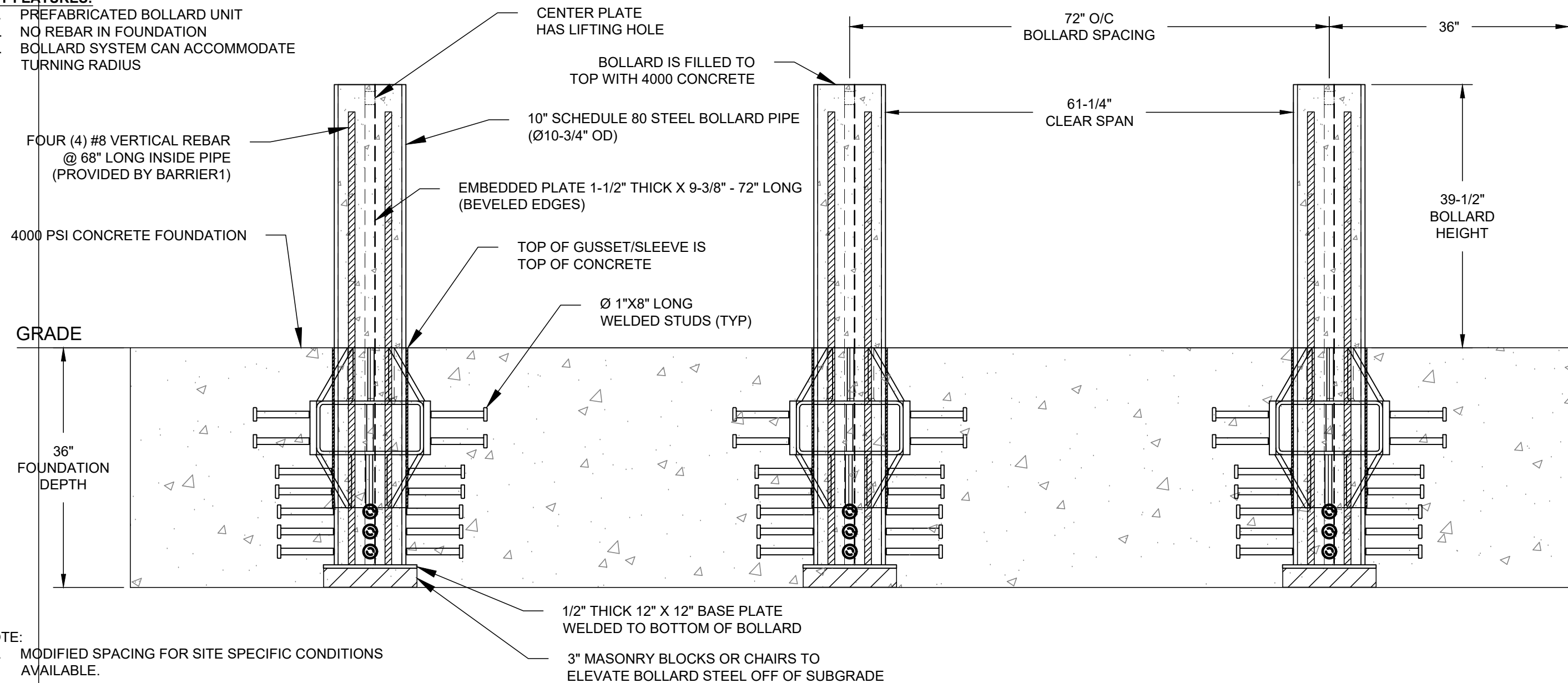
SET & POUR BOLLARD - MODEL SPB-1200

CRASH TESTED TO ASTM F2656-07 - M50/P2 RATED - STOPS 15,000 LB. VEHICLE AT 50 MPH IMPACT

TYPICAL BOLLARD ARRAY INSTALLATION

KEY FEATURES:

1. PREFABRICATED BOLLARD UNIT
2. NO REBAR IN FOUNDATION
3. BOLLARD SYSTEM CAN ACCOMMODATE TURNING RADIUS



NOTE:

1. MODIFIED SPACING FOR SITE SPECIFIC CONDITIONS AVAILABLE.



PATENT PROTECTED

ELEVATION VIEW (ARRAY)

SPB-1200 WEBSITE DRAWING

SHEET: 3 OF 6

20250625-10-M

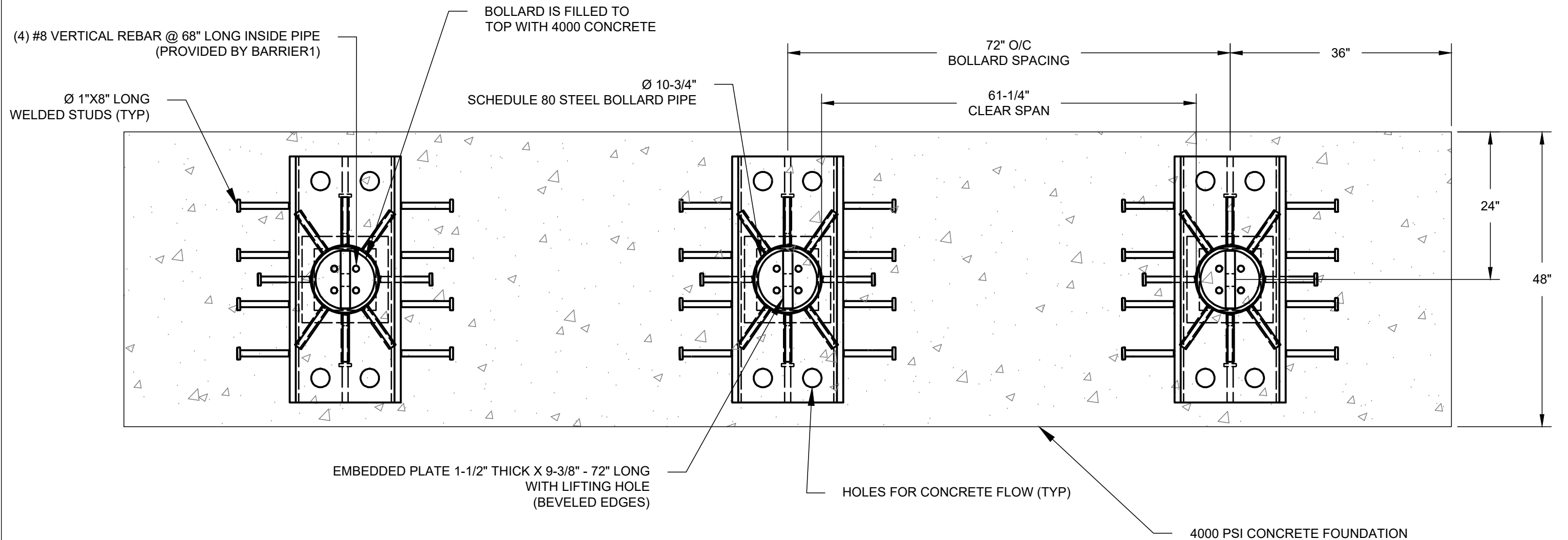
SCALE: N.T.S.

M50 ARRAY

SET & POUR BOLLARD - MODEL SPB-1200

CRASH TESTED TO ASTM F2656-07 - M50/P2 RATED - STOPS 15,000 LB. VEHICLE AT 50 MPH IMPACT

TYPICAL BOLLARD ARRAY INSTALLATION



NOTE:

1. MODIFIED SPACING FOR SITE SPECIFIC CONDITIONS AVAILABLE.



PATENT PROTECTED

PLAN VIEW (ARRAY)

SPB-1200 WEBSITE DRAWING

SHEET: 4 OF 6

20250625-10-M

SCALE: N.T.S.

M50 STANDALONE

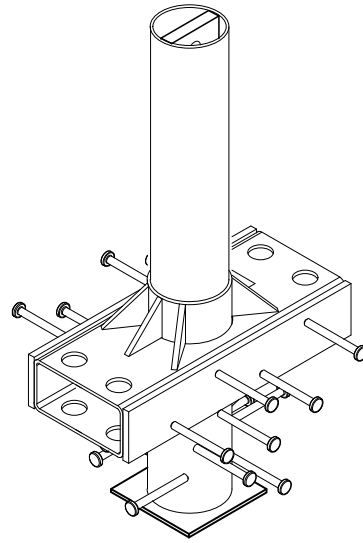
SET & POUR BOLLARD - MODEL SPB-1200

CRASH TESTED TO ASTM F2656-07 - M50/P2 RATED - STOPS 15,000 LB. VEHICLE AT 50 MPH IMPACT

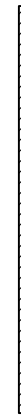
MATERIALS PROVIDED

STANDARD FINISH:
BLACK PAINT

PREFABRICATED BOLLARD MATERIALS PROVIDED BY BARRIER1 SYSTEMS



(QTY 1) EACH:
BOLLARD ASSEMBLY



PRE-CUT #8 REBAR
@ 68" LONG
QTY: FOUR (4) PER BOLLARD
(INSIDE BOLLARD)

MATERIALS PROVIDED BY INSTALLER

1. CONCRETE, 2.7 CUBIC YARDS PER BOLLARD
2. CHAIRS TO ELEVATE BOLLARDS ABOVE SUBGRADE

M50 ARRAY

SET & POUR BOLLARD - MODEL SPB-1200

CRASH TESTED TO ASTM F2656-07 - M50/P2 RATED - STOPS 15,000 LB. VEHICLE AT 50 MPH IMPACT

INSTALLATION STEPS

① EXCAVATE THEN TAMP SUBGRADE WITH PLATE TAMPER.

② USE MASONRY BLOCK OR CHAIRS TO ELEVATE BOLLARD OFF SUBGRADE, SO THAT TOP OF GUSSET / SLEEVE IS SAME HEIGHT AS TOP OF CONCRETE.

③ PLACE PREFABRICATED BOLLARDS INTO EXCAVATION.

④ INSERT VERTICAL REBAR INTO BOLLARD TUBE.

⑤ FILL BOLLARD TUBE AND EXCAVATION WITH CONCRETE.

