

Tube Frame Pallets



Tube Frame Pallets provide considerable advantages to your current outfit, revamp your operations with aluminum pallets from New Age Industrial!

- Unlike wooden or plastic pallets, aluminum pallets require no specialized storage space!
- **Fire Resistant**
- **UV Resistant**
- Metal-Detectable
- **Strengthened by COLD°**
- **100% Recyclable**
No disposal fees!
- One Year Guarantee against material defects and workmanship.
- Lifetime Guarantee against rust and corrosion.



99613

Tube Frame Pallets

Model No.	Size W-H-D	Net Lbs.	Ship Lbs.
52400	40" x 5¼" x 40"	42	47
99613*	40" x 5¼" x 48"	48	51
99749	40" x 5¼" x 48"	45	53
50788	48" x 5¼" x 48"	51	53

* Equipped with center base tube as shown.

Custom sizes available

LOAD WEIGHTS:

	99613-99749 52400	50788
STATIC	30,000 LBS.	20,000 LBS.
DYNAMIC	5,000 LBS.	4,000 LBS.
RACKABLE	5,000 LBS.	4,000 LBS.
TRUCKLOAD	510 T.L.	442 T.L.
ALUMINUM WEIGHT	49 LBS.	51 LBS.



50788

No center support

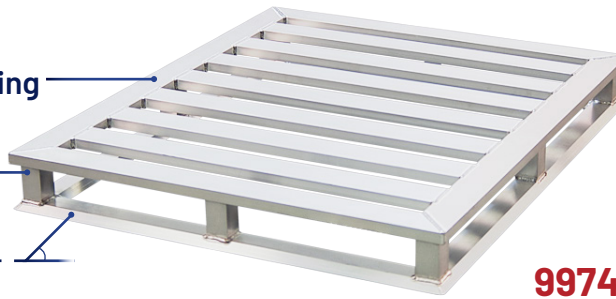


Tube Frame Pallets

Rectangular Tubing

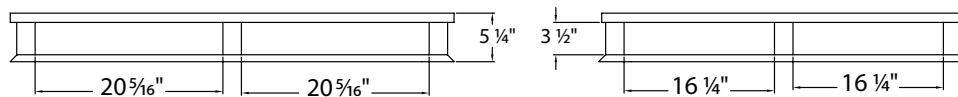
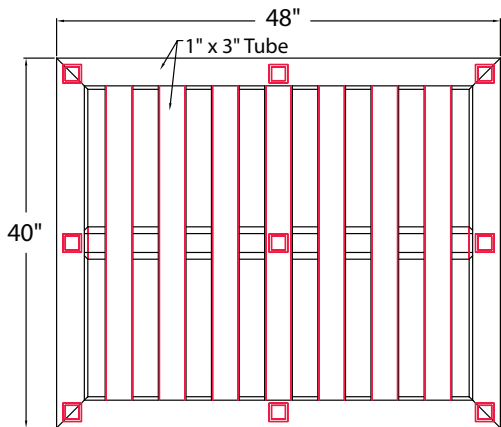
Heavy Wall
Uprights

45° Camfered
I-Beam Base



Four way design allows
users to pick up pallets
from any side!

99749



Construction

- Top of pallet, framework and laterals, are constructed of 1" x 3" x .09" wall tubing.
- Risers are constructed of 2" x 2" x .2175" heavy-wall tubing.
- Easy to pick up! Pallet bases are constructed using unique 3/4" x 3 3/8" camfered I-beam that allows forks to slide over.

- All welded construction, no open tubing that damages easily or collects dirt and debris.
- Ideal for closed-loop systems, only circulating within your own facility or company operations.
- Customize size and function! Get the exact pallet you need to get the job done!



Integrated rivets to
secure equipment

Pallet with anti-slip,
perforated cover



Pallet with
strap extrusion base

