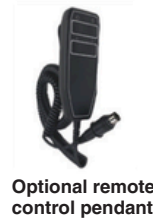


## LiftStik Custom Series

Superior durability and maneuverability make these units perfect for any manufacturing facility or production environment, food processing and pharmaceutical facility.

### Features

- Aluminum and powder coated modular steel construction, mix and match to create the ideal lifting solution
- Includes a Safety clutch for controlled lifting, and overload protection
- Ergonomic handle with soft start control switch
- Optional two speed plug and play remote control pendant
- 115V internal charger - sealed AGM batteries
- Choose from two lift heights, 67" or 84" with either 285 or 440 lbs. capacity
- Four swivel casters - large rear casters have foot operated locks
- Available with fixed or adjustable base legs (specify)



Optional remote control pendant



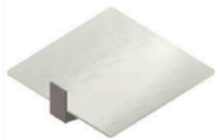
PLS67-285 with adjustable base legs and UHMW platform

Model	Capacity	Raised Height	Lowered Height	Dimensions H x W x L	Tool / Platform W x L	Lifting Speed*	Power Unit	Battery Charger	Shipping Weight
<b>LiftStik Compact &amp; Adjustable Base Series</b>									
PLS67-285	285 lbs	67"	3 1/2"	76 x 20 - 28 x 36"	UHMW - 19 1/2 x 19 1/2"	22 sec.	24VDC	115 Volt	190 lbs.
PLS67-440	440 lbs	67"	3 1/2"	76 x 20 - 28 x 36"	Stainless Steel 19 1/2 x 19 1/2"	22 sec.	24VDC	115 Volt	250 lbs.
PLS84-285	285 lbs	84"	3 1/2"	92 x 20 - 28 x 36"	UHMW - 19 1/2 x 19 1/2"	30 sec.	24VDC	115 Volt	220 lbs.
PLS84-440	440 lbs	84"	3 1/2"	92 x 20 - 28 x 36"	Stainless Steel 19 1/2 x 19 1/2"	30 sec.	24VDC	115 Volt	180 lbs.

\*Speed of unit without load. † Adjustable Base

## LiftStik Specialized Applications

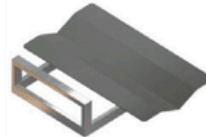
LiftStik models can be configured with a wide range of tools and attachments for roll handling, drum handling, and server applications.



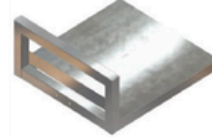
UHMW Plastic Platform



Fixed Forks



Wave V-Cradle Platform



Heavy-Duty Stainless Platform



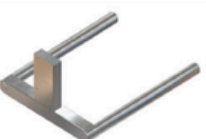
Server Platform - Side Entry



Roll Manipulator



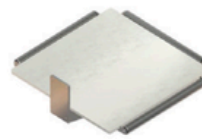
Pivoting Crane Arm



Twin Mandrel



Clamp & Turn



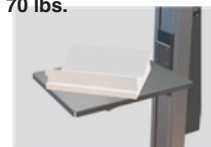
UHMW Platform with Rollers

## LiftStik Compact-Quick Lift Series

Powered quick lift with exceptional maneuverability make these units ideal for use anywhere in your facility where speed and ergonomics is needed. Units weigh only 70 lbs.

### Features

- Aluminum and powder coated steel construction for easy handling
- Load is carried directly over wheels for excellent stability
- Ergonomic handle with easy access fingertip lift control switch
- 115V external charger, sealed AGM batteries
- Four swivel casters - rear casters have foot operated floor locks



PLS53-110



PLS53-150

Model	Capacity	Raised Height	Lowered Height	Dimensions H x W x L	Tool / Platform W x L	Lifting Speed*	Power Unit	Battery Charger	Shipping Weight
<b>LiftStik Compact &amp; Adjustable Base Series</b>									
PLS53-150	150 lbs	53"	4 1/2"	60 x 19 1/2 x 31"	19 x 19"	11 sec.	24VDC	115 Volt	140 lbs.
PLS53-110	110 lbs	53"	4 1/2"	60 x 18 x 31"	19 x 19" w/ V-Cradle	11 sec.	24VDC	115 Volt	150 lbs.

\*Speed of unit without load.